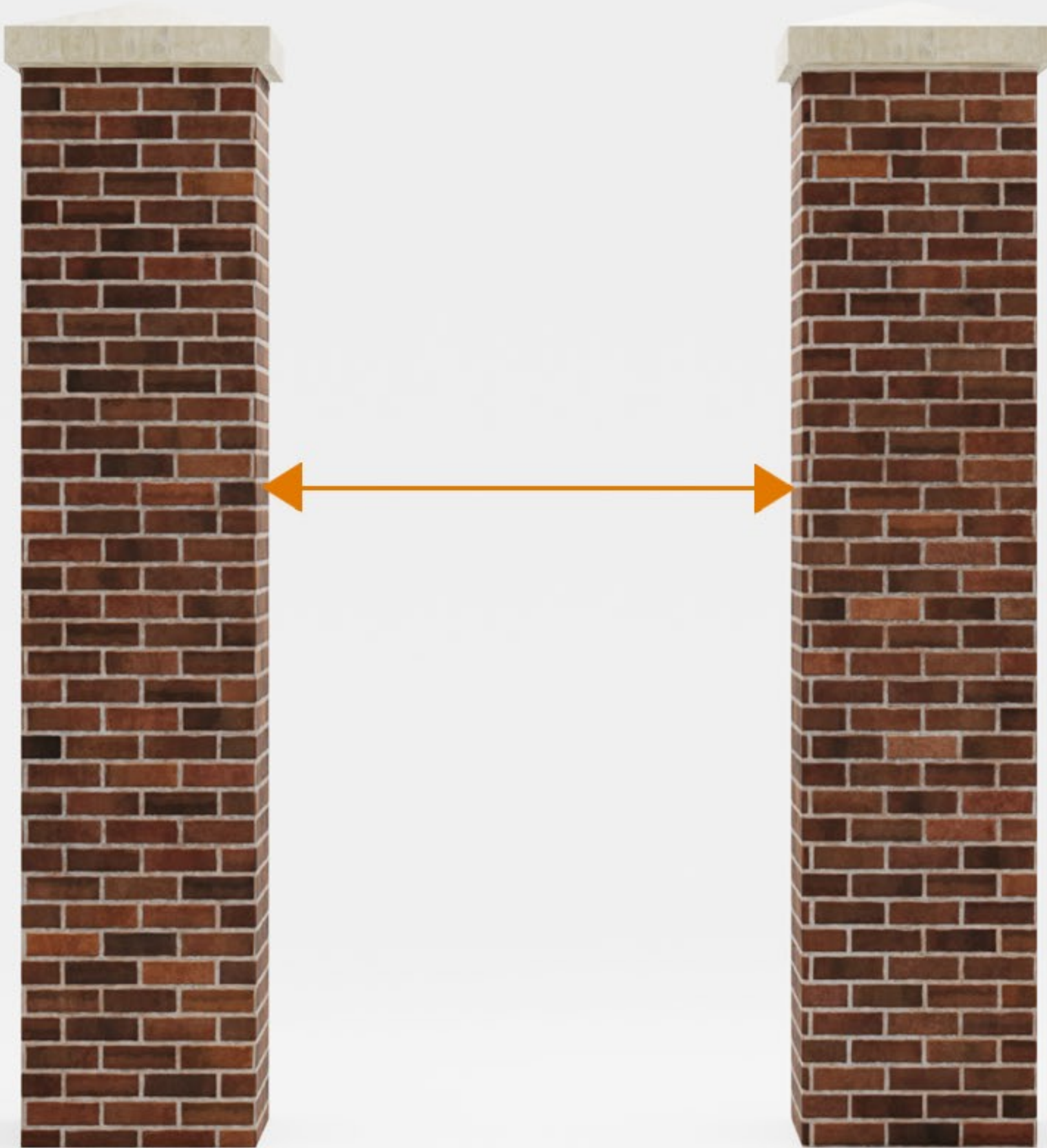


# 1: CHECK WIDTH OF OPENING



## NOTES

**CHECK OPENING WIDTH -  
GATE WIDTH + 50MM  
PER POST + 20MM HINGE  
& LOCK ALLOWANCE**



## 2: MARK GATE POST



## NOTES

- **HOLD SQUARE**
- **3 X PLACES ON WALL**
- **4 X PLACES ON FLOOR**



## 3: DRILL WALL / BRICK



## NOTES

- 10MM DRILL BIT
- MIN 50MM DEPTH



## 4: DRILL FLOOR / BASE



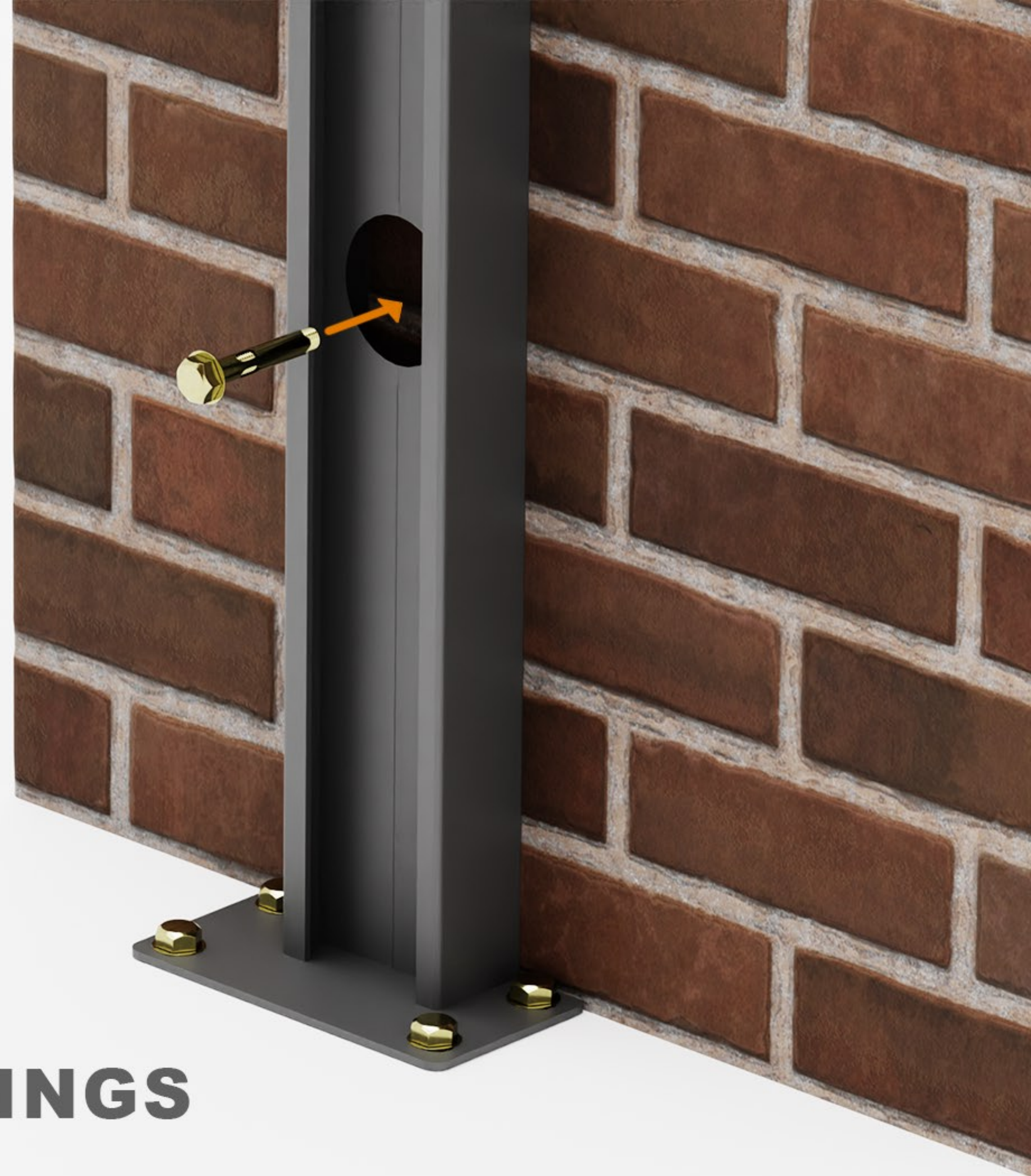
## NOTES

- 10MM DRILL BIT
- MIN 50MM DEPTH

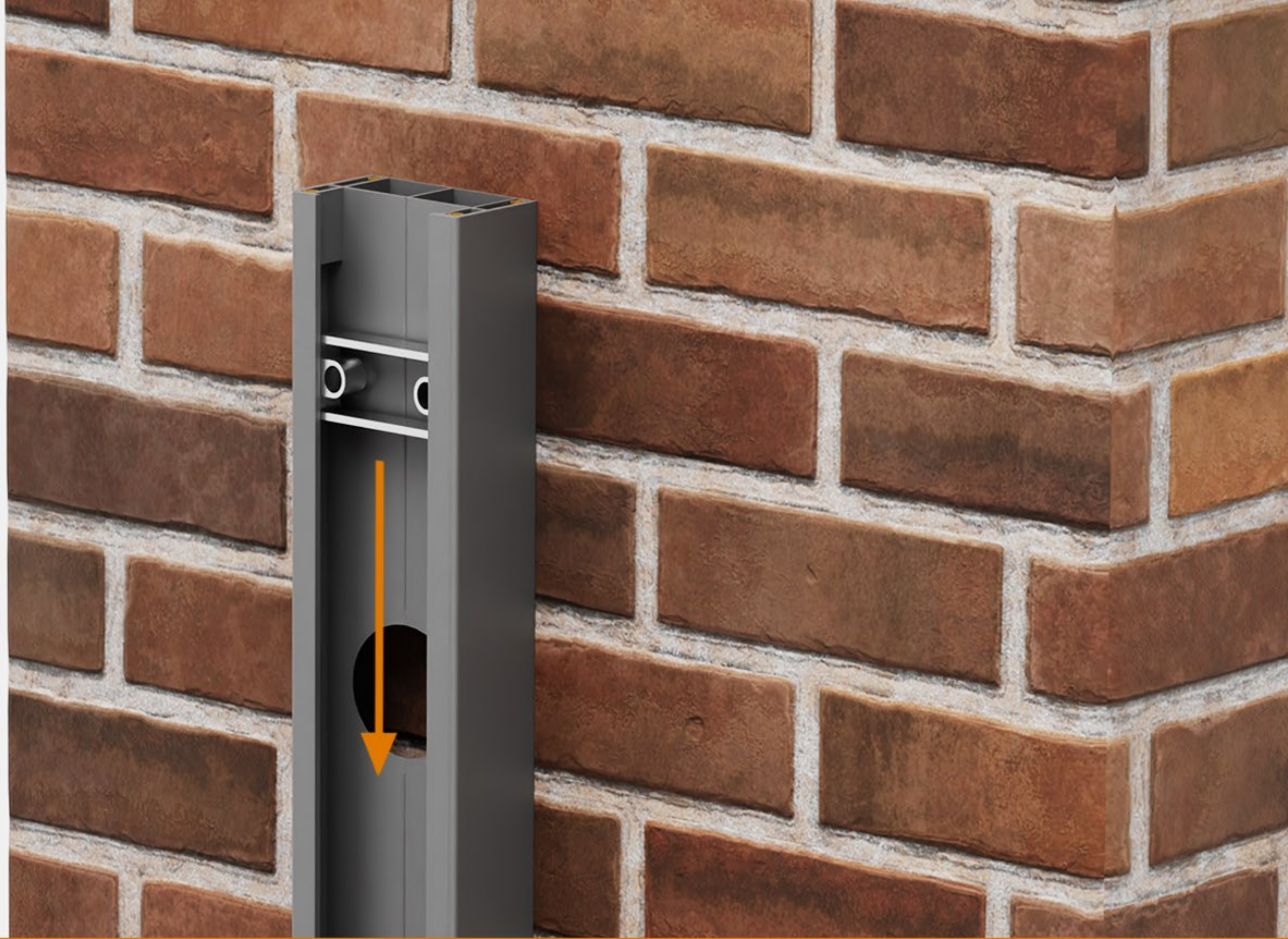


## NOTES

- M10 X 45MM BOLTS
- 7 X PLACES
- WRENCH / SOCKET SET



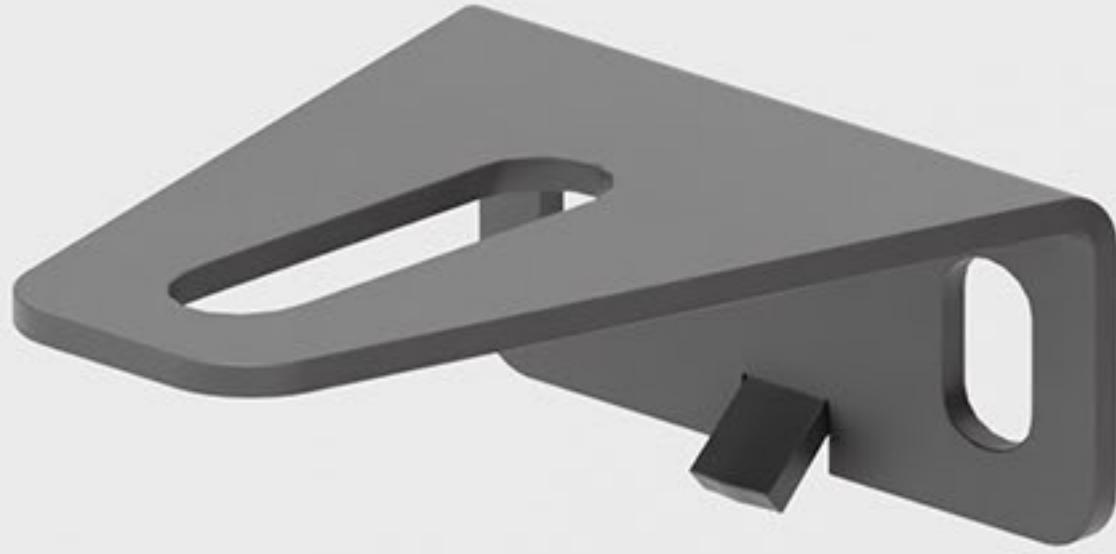
## 5: FIXINGS



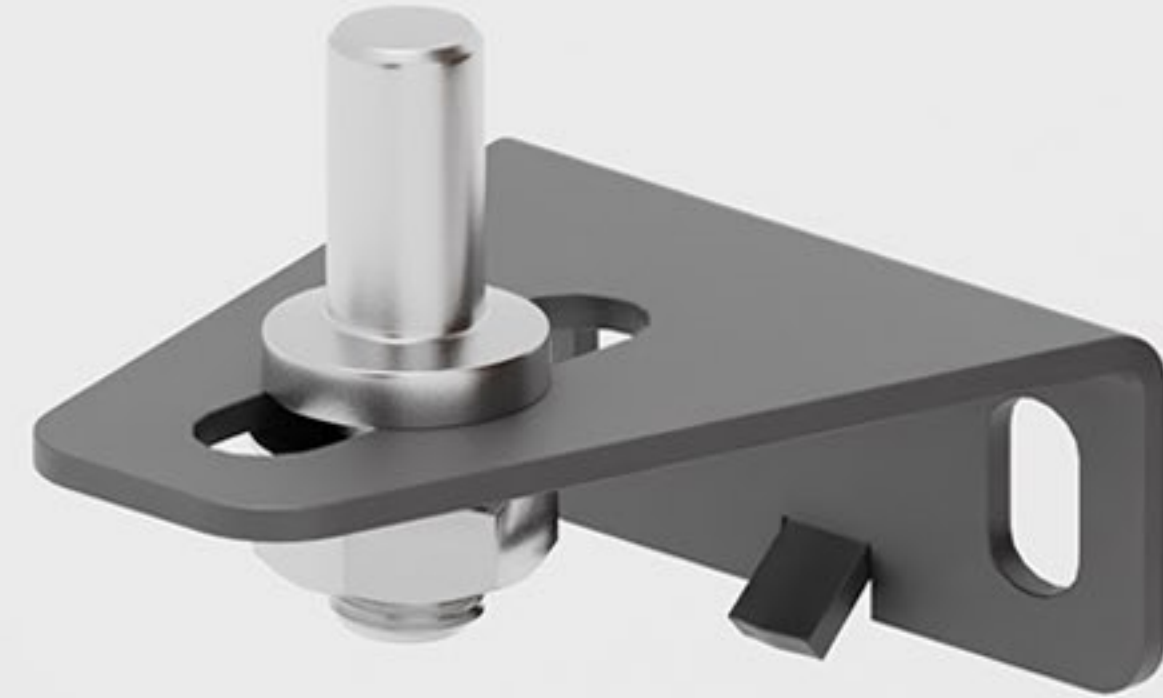
## **6: LOAD HINGE CARRIER**

# 7: ASSEMBLE SPIGGOT

**A)**



**B)**



**NOTES**

- DO NOT OVER-TIGHTEN

## NOTES

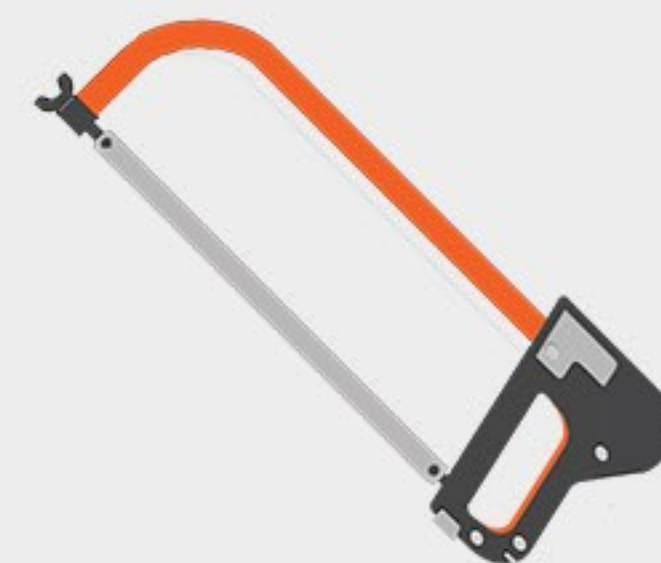
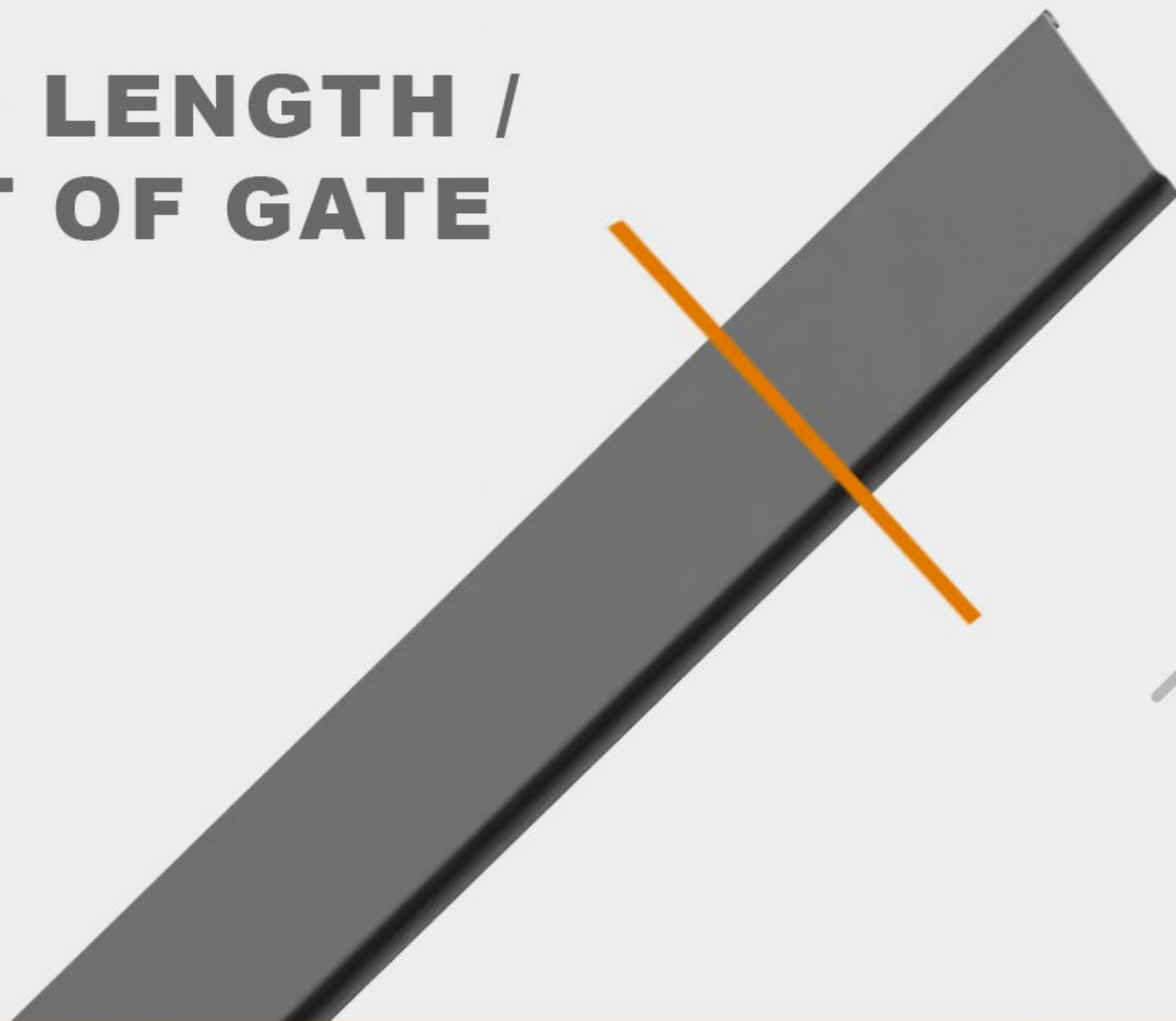
- **M10 X 20MM BOLTS**
- **2 X PLACES**
- **WRENCH / SOCKET SET**



**8: FIT LOWER HINGE**

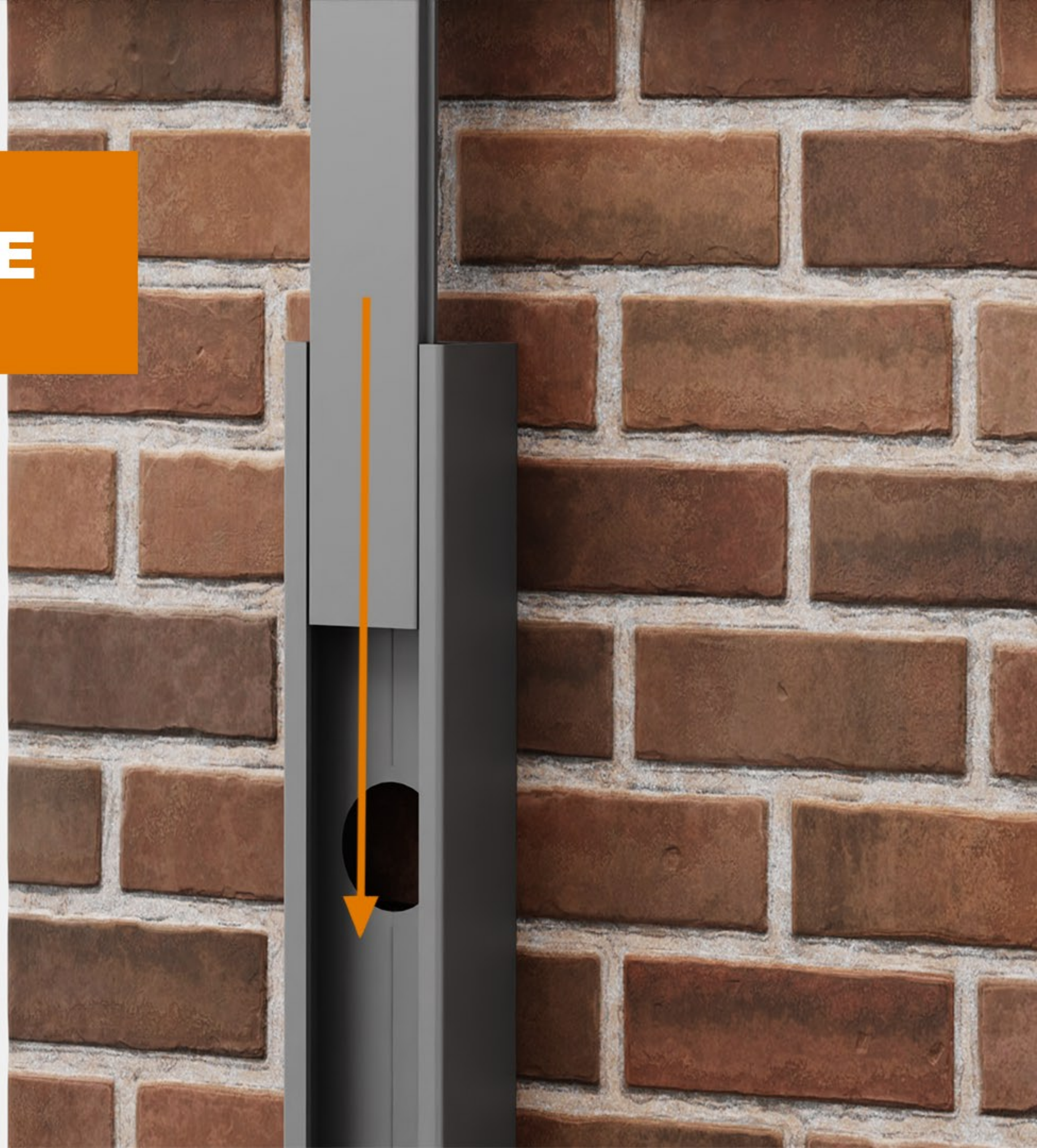


**CUT TO LENGTH /  
HEIGHT OF GATE**



**9: COVER PLATE**

# 10: SLIDE COVER PLATE



# 11: ASSEMBLE UPPER SPIGGOT



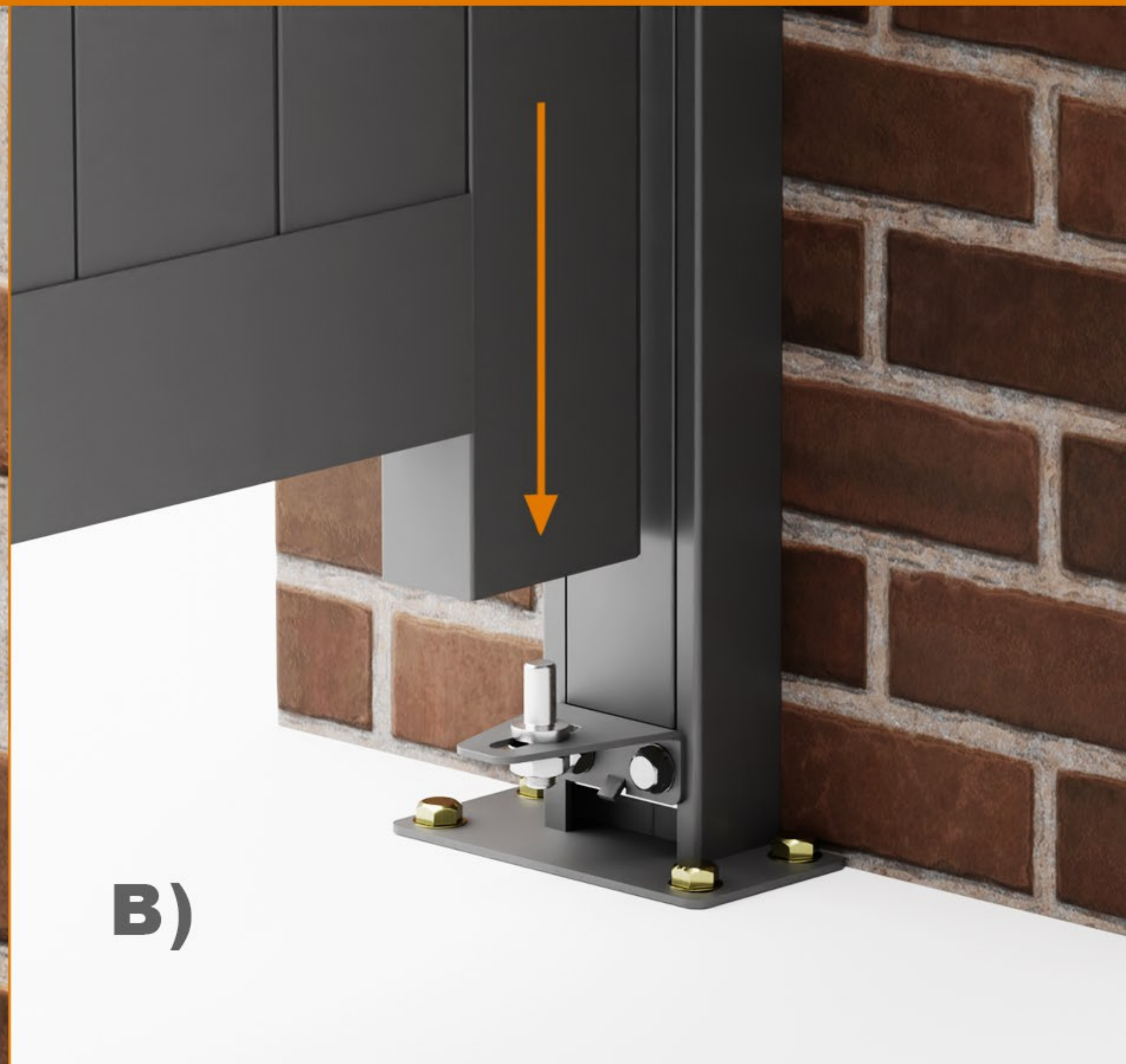
## NOTES

- OPPOSITE TO LOWER BRACKET

# 12: LOAD UPPER CARRIER & GATE ON LOWER SPIGGOT



**A)**



**B)**

## NOTES

- **M10 X 20MM BOLTS**



**13: FIT UPPER HINGE**

## 14: FIT TOP COVER PLATE

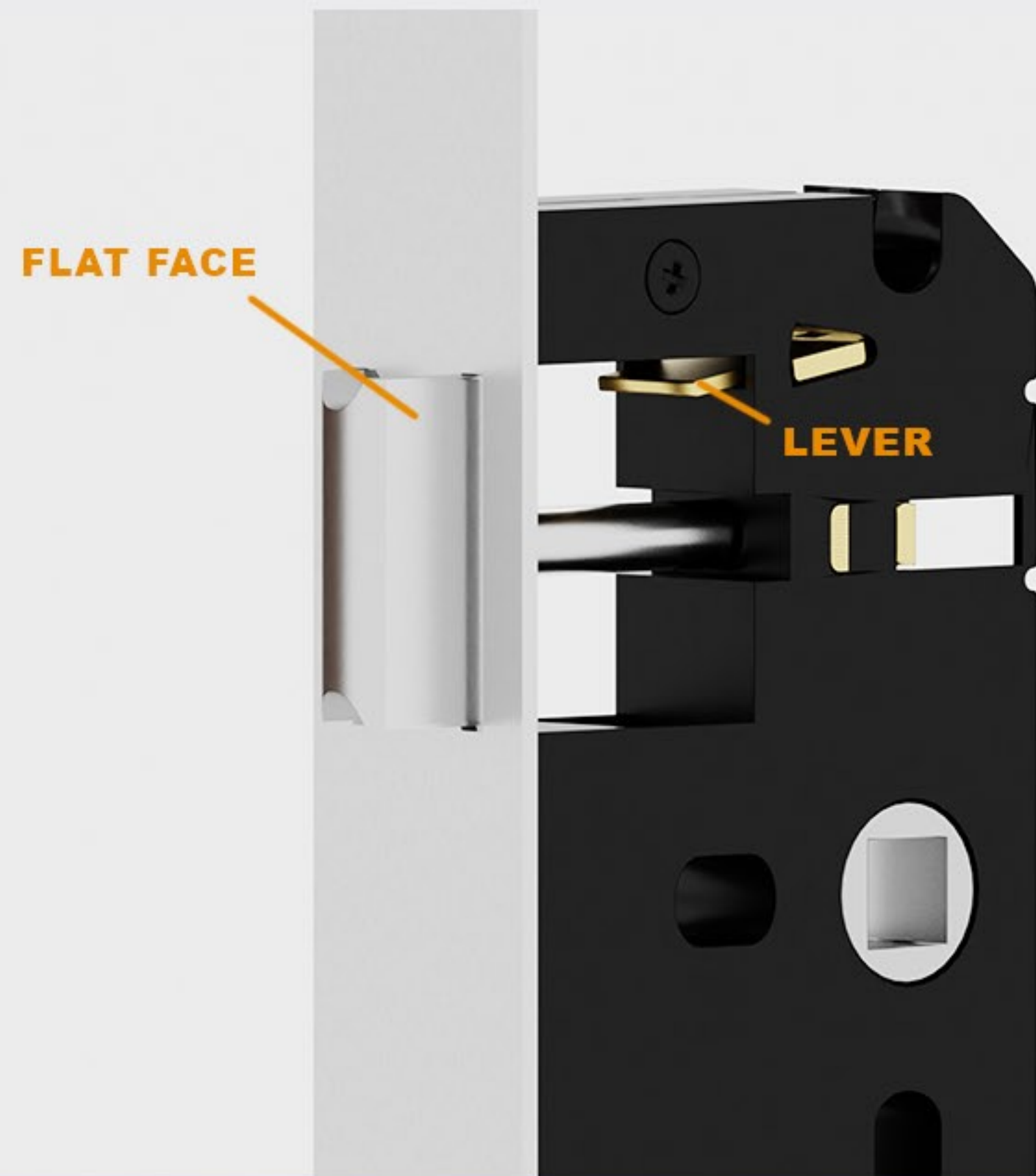


- **M4 X 15MM SCREWS - 4 PLACES**

## 15: LOCK ASSEMBLY



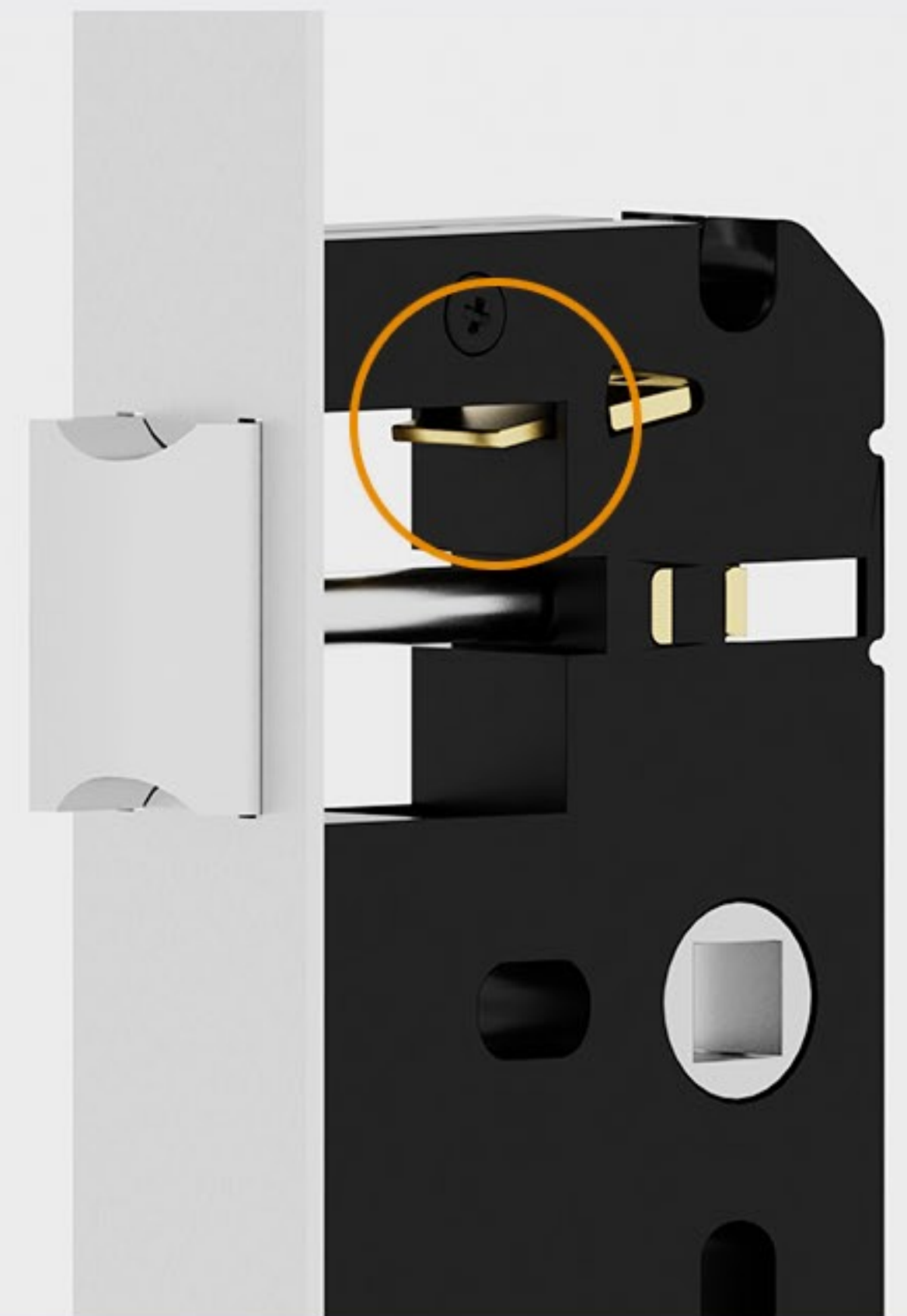
# 16: SET LATCH DIRECTION



**A)** SET FLAT FACE TOWARDS  
INSIDE OF GATE DIRECTION



**B)** TO CHANGE DIRECTION OF  
LATCH LIFT LEVER, DEPRESS  
LATCH AND ROTATE 180°  
INSIDE OF GATE DIRECTION



**C)** ONCE SET ENSURE LEVER  
FALLS BACK TO HOME POSITION



# 17: HANDLE ASSEMBLY



- **M4 X 25MM**  
**2 PLACES**



- **INSERT LOCK**
- **INSERT SPINDLE**



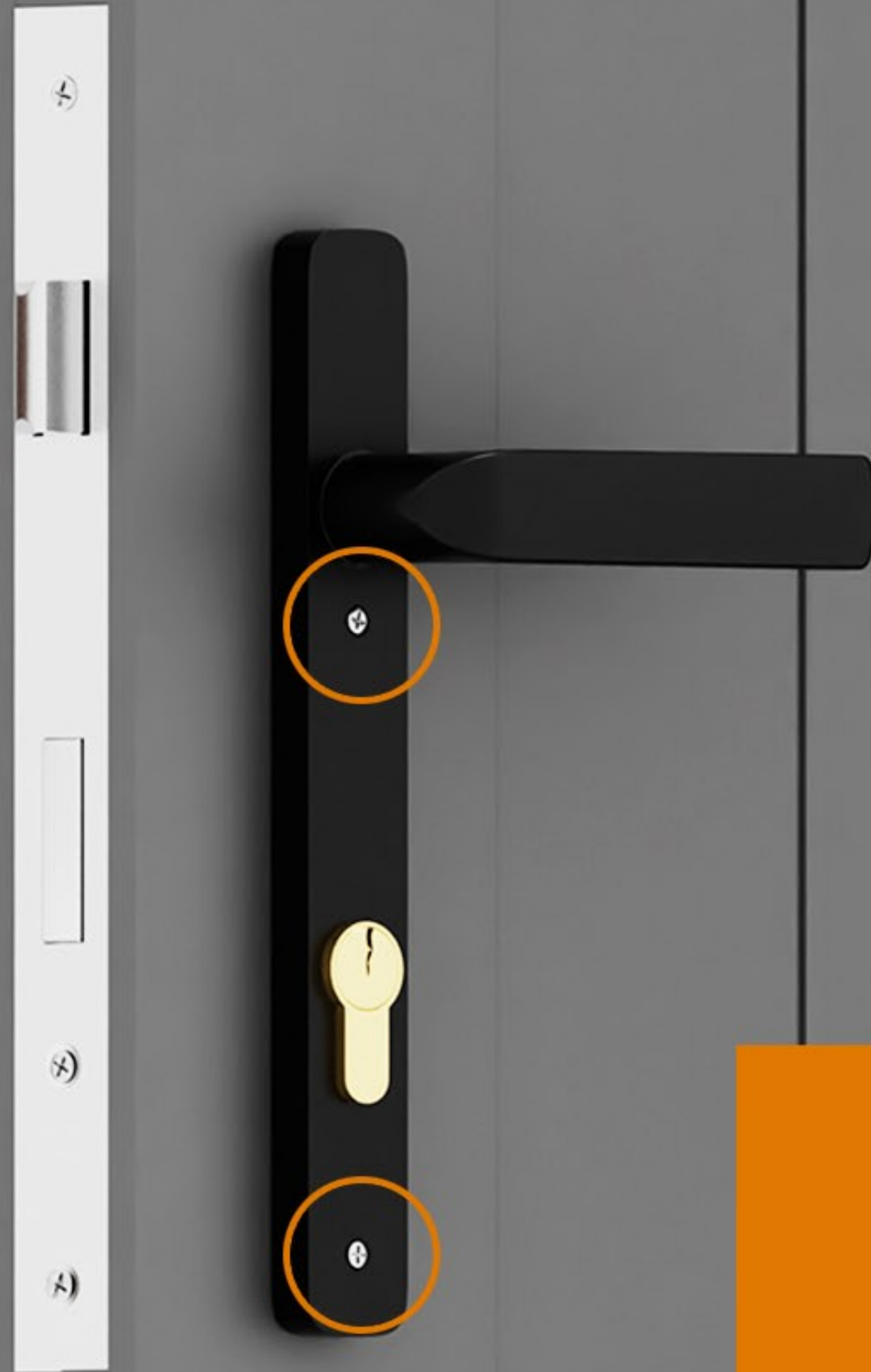
- **M4 X 45MM**  
**2 PLACES**

# 18: HANDLE



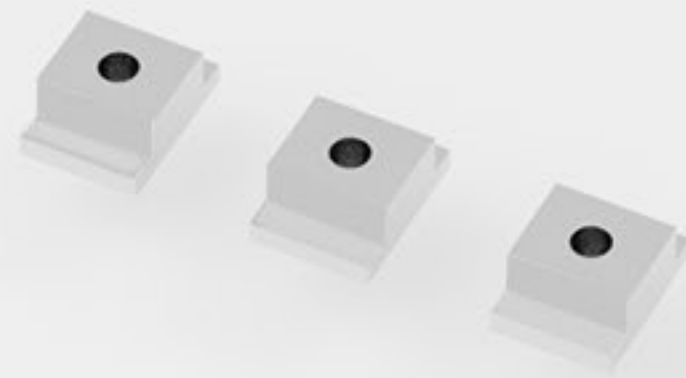
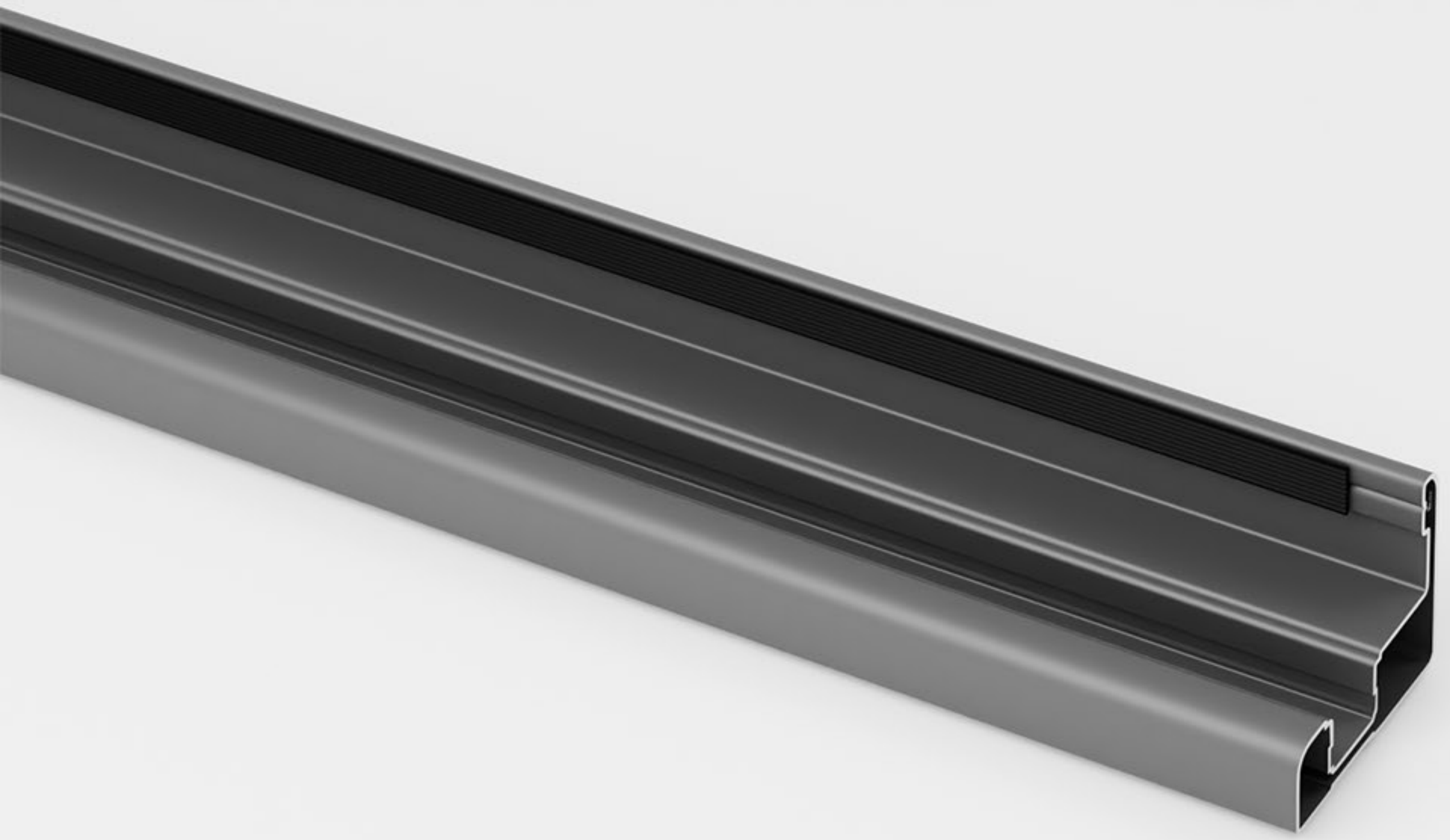
**SET LH / RH HANDLE ENSURE FIXING HOLES TO INSIDE OF GATE**

# 19: HANDLE



- **M4 X 60MM**  
**2 PLACES**

## 20: LOCK KEEP



- **LOAD 3 x SCREW BLOCKS**

## 21: LOCK KEEP

- **SET TO APPROXIMATE CENTRE OF RAIL**



## 22: LOCK PLATE

- **M4 x 25MM**  
**3 x PLACES**



A diagram illustrating the installation of a lock post. The scene shows a corner of a brick wall with a concrete ledge on top. A grey metal lock post is being inserted into a hole in the brickwork. An orange arrow points from the text '23: FIT LOCK POST' to the lock post. Below the wall, a grey metal base is visible. The background is a plain light blue-grey color.

## 23: FIT LOCK POST

**REPEAT STEPS 2 TO 5**



**24: SLIDE LOCK KEEP INTO POST**



## 25: FIT TOP COVER PLATE



- **M4 X 15MM SCREWS - 4 PLACES**





**26: ADJUST LOCK KEEP**

**SET HEIGHT TO LATCH**



**27: CUT COVER PLATE TO LENGTH - 2 x PLACES**

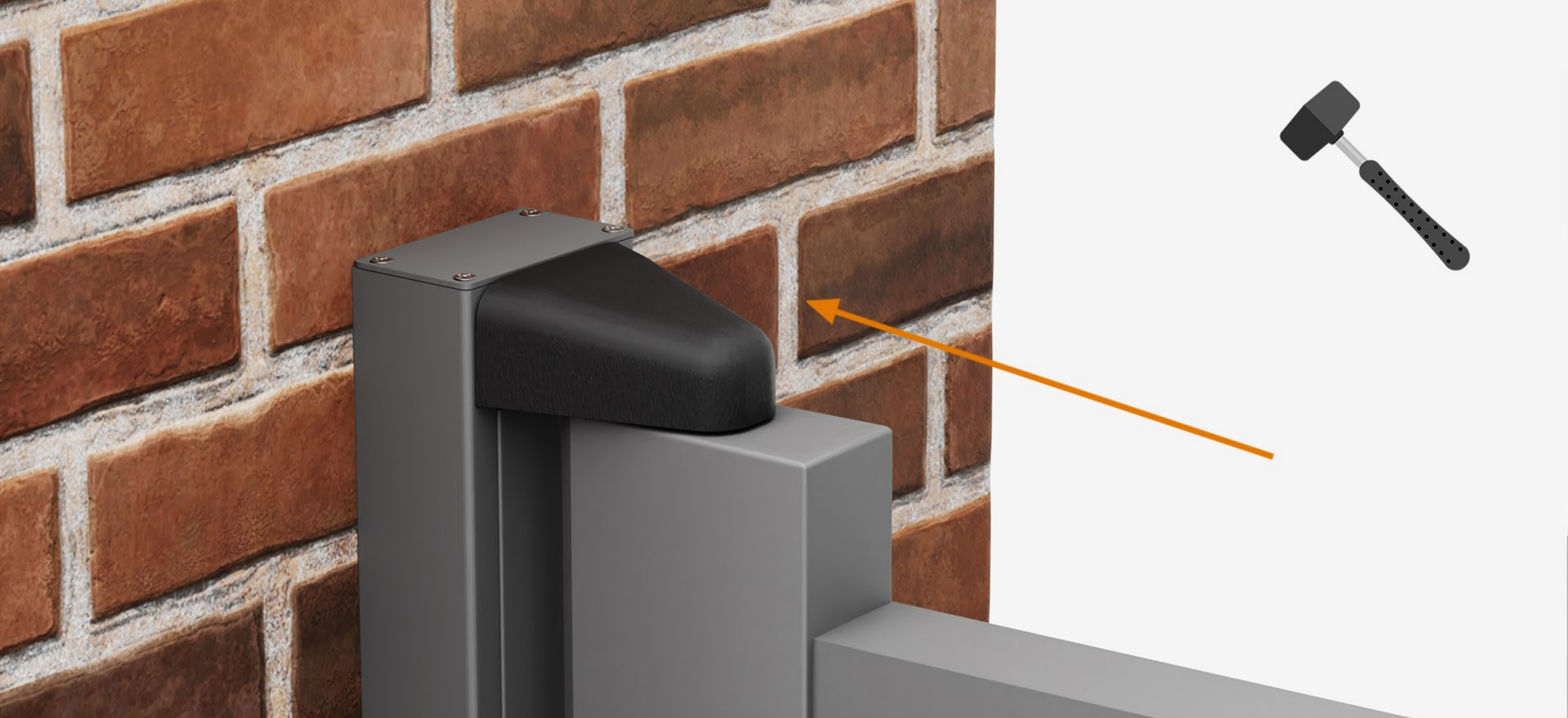


## 28: FINAL ADJUSTMENTS

### NOTES

- **SLACKEN BOLTS**
- **ADJUST TO LATCH**
- **2 x PLACES**





**29: FIT HINGE CAPS - 2 x PLACES**

**PROJECT COMPLETE**

